

EPA Methane Regulations

Key Features

Eric Kills A Hundred, *Tribal Programs Manager*

Edwin LaMair, *Methane Legal Fellow*

January 19, 2022

Environmental Defense Fund (EDF)

EDF is one of the world's leading environmental organizations. Our mission is to preserve the natural systems on which all life depends.

We take on climate change and other grave threats by identifying what's most urgent and where we can make the most difference.

We bring together people from all sides to tackle challenges from many perspectives, not just the environmental one.



Climate & Health Impacts

- Methane is responsible for at least 25% of global warming
- Oil & gas production causes one-third of U.S. methane emissions
- Toxic air pollution leaks alongside methane



Methane Leaks & Solutions



Studies show oil & gas methane emissions are 60-70% than EPA estimates

“Super-emitter” events account for the large divergence

Quick detection and mitigation of super-emitters is critical

Leak Monitoring

- Inspections to find and fix leaks 4x per year
- Inspections at smaller sites that are large polluters
- Advanced monitoring solutions

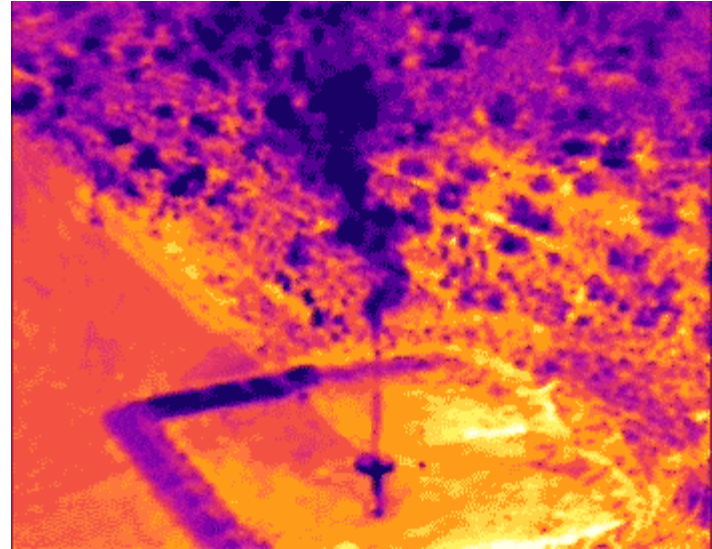


Flaring

- Eliminate routine flaring
- Improve flare performance

Pneumatics

- Zero emitting devices



Tribal Engagement

Tribal Consultations

- What do you need to make a consultation successful?



Environmental Justice-Disparate Impacts to Tribes

- Disparate impacts to Native American and other socioeconomically disadvantaged populations...Lacking equal access to climate-sensitive resources-local water and food supply, and information resources
- Indigenous communities face disproportionate risks...degradation of natural and cultural resources
- Native Americans and other minorities face higher risks of contracting deadly cancers

Tribal Implementation Plans (TIPs)

- Tribal Authority Rule and TIPs
- Stakeholder Engagement
- CAA Section 111(d)
- What are your needs in creating a TIP
- What does meaningful engagement look like to you?
 - State Implementation Plans
 - Federal Implementation Plans

Bureau of Land Management (BLM)

- State and BLM actions
- Flaring
- BLM Action on Indian lands
- BLM is expected to take additional action to prevent waste of oil and gas on Federal and Tribal lands

Thank you!

References & Resources

<https://blogs.edf.org/energyexchange/2021/11/09/heres-what-you-need-to-know-about-epas-landmark-methane-proposal/>

<https://www.edf.org/climate/methane-crucial-opportunity-climate-fight>

<https://www.edf.org/climate/methane-studies>